

# Fibre Samples

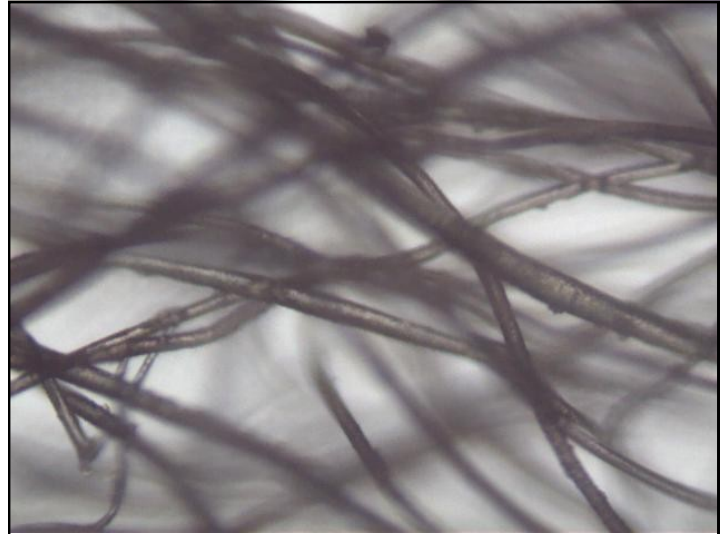


## **Linen**

*Characteristics:* tightly woven strands with some fraying at the edges

*Strand width:* 0.030-0.060mm

*Common uses:* In clothing. The train windows had curtains made of red linen



## **Wool**

*Characteristics:* a tangled mess of irregular, thick strands

*Strand width:* 0.060-0.120mm

*Common uses:* Carpets and clothing. The train carpet and seats contained wool

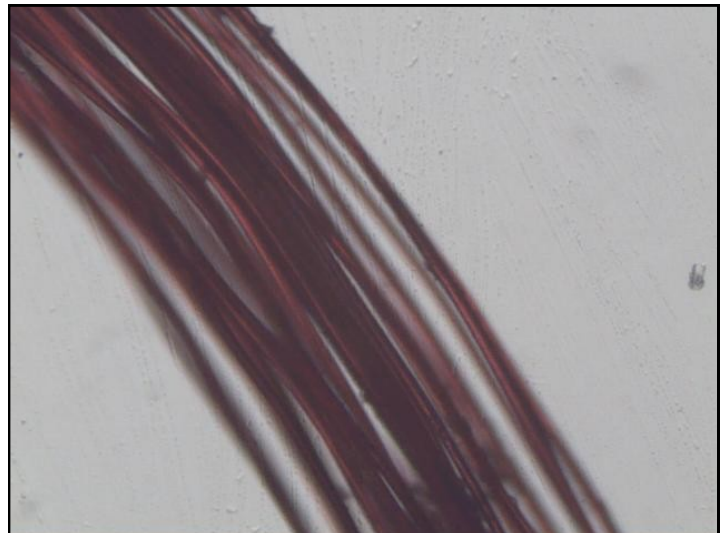


## **Cotton**

*Characteristics:* tightly packed strands, twisted into a thread

*Strand width:* 0.020-0.055mm

*Common uses:* Multipurpose. Often seen in clothing. The victim's shirt was made of a light coloured cotton



## **Polyester Satin**

*Characteristics:* man-made material of shiny, straight fibres

*Strand width:* 0.040 to 0.060mm

*Common uses:* Light items of clothing for decoration, such as scarves or hair bands